

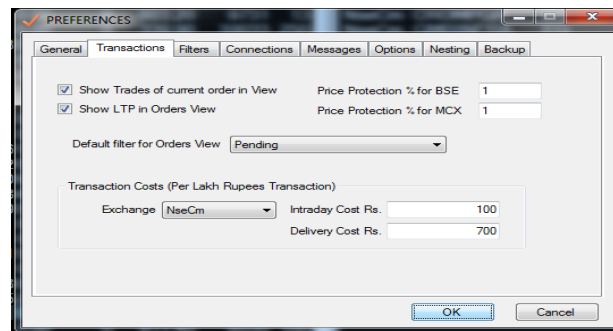


Money Maker

Money Maker Changes made on release dated: 15th November 2013

Transactional Costs in Nets:

For Setting up Transaction Costs , Go To –Tools-Preferences and select transactions Tab. Below shown screen will appear. Here user can setup his / her desired transaction cost. The cost is to be entered in terms of Rupees per Lakh.



Once this cost is set, User will be able to see cost (shows total cost incurred), MTOM at cost (shows MTM value with transaction cost), and Value at cost (total position value with cost) in the Net Position (alt+F6) window.

Live Price View in Microsoft Excel:

User can view the live price view in Microsoft Excel provided the MS Office is installed in the computer. To view in excel right click on the price view and from the menu select last option at bottom- “Open-In-Excel”. If you want to open it in new excel file select “Normal Workbook”. If you want to open the view in the existing file select “Existing Workbook” (here in the existing if the sheet named “Price View” is present it will be used otherwise new sheet named “Price View” will be created). User can open multiple views in the excel at a time for multiple price views. (Please note that for using additional columns of excel do not put any formula in the columns which are already used by the system or do not add any additional column in between)

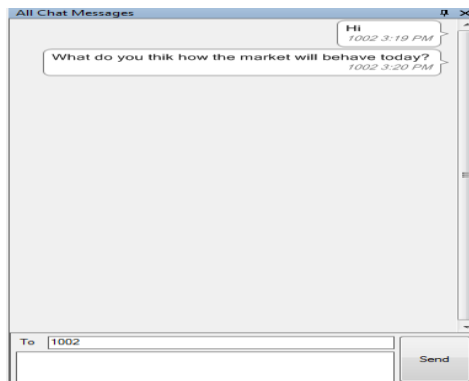


Money Maker

Exchange	Symbol	Series	BuyQty	BuyPrice	SellPrice	SellQty	ValueIn	LastTrade	LastTrade	Trend	Indi	High	PerCent	Low	Open	Close	NetChang	AvgTrade	Volume	LastTradeTime
NseCm	AXISBANK	EQ	0	1097.1	2273	48229.7	1097.1	1	1102.45	0	1055	1055	1097.1	0	1086.95	4437159	11/14/2013 15:5			
NseCm	BALAJI-AJF	EQ	399	2034.8	0	0	2772.946	2034.8	10	2060	0	2008.45	2034.7	0	2035.04	136260	11/14/2013 15:5			
NseCm	BANKBAR	EQ	353	603.2	0	0	9731.127	603.2	13	606.75	0	594.1	595.2	0	601.01	1619129	11/14/2013 15:5			
NseCm	BHARTIAR	EQ	838	339.9	0	0	10033.48	339.9	250	344.7	0	335.05	335.05	0	340.57	2946084	11/14/2013 15:5			
NseCm	BHEL	EQ	0	0	135.8	3853	3252.448	135.8	57	136.8	0	134.5	135	0	136	2391506	11/14/2013 15:5			
NseCm	BPCLE	EQ	3	344.15	0	0	3898.642	344.15	20	348.9	0	338.5	339.7	0	344.14	1132865	11/14/2013 15:5			
NseCm	CAIRN	EQ	2479	317.45	0	0	9484.492	317.45	25	319.9	0	315.25	315.4	0	317.09	1098897	11/14/2013 15:5			
NseCm	COALINDI	EQ	1408	274.45	0	0	14321.97	274.45	10	280.45	0	271.3	279.5	0	276.37	5182174	11/14/2013 15:5			
NseCm	DLF	EQ	4869	145.3	0	0	7326.396	145.3	20	147	0	143.5	144.15	0	145.37	5039827	11/14/2013 15:5			
NseCm	DRREDDY	EQ	0	0	2461.6	99	3066.747	2461.6	1	2484	0	2445.55	2465	0	2467.77	124272	11/14/2013 15:5			
NseCm	GAIL	EQ	0	0	320.15	1158	2872.162	320.15	8	327.7	0	319.4	325.1	0	323.2	888664	11/14/2013 15:5			
NseCm	GRASIM	EQ	0	0	2609.05	55	3684.332	2609.05	1	2649	0	2587.2	2615.25	0	2622.45	140492	11/14/2013 15:5			
NseCm	HCLTECH	EQ	0	0	1084.6	143	7901.19	1084.6	5	1103.75	0	1077.55	1089.35	0	1085.19	645158	11/14/2013 15:5			
NseCm	HDFC	EQ	0	0	793.3	440	9782.02	793.3	2	812.95	0	790	800.1	0	797.7	1226278	11/14/2013 15:5			
NseCm	HDFCBAN	EQ	2895	642.2	0	0	20362.71	642.2	3	649.9	0	638	638	0	645.06	3156715	11/14/2013 15:5			
NseCm	HEROMOTI	EQ	171	2049.05	0	0	3090.352	2049.05	50	2059	0	2000.55	2012	0	2046.36	151017	11/14/2013 15:5			
NseCm	HINDALCO	EQ	0	0	115.2	21447	7300.821	115.2	2	117	0	114.35	115	0	115.63	6313931	11/14/2013 15:5			
NseCm	HINDPETR	EQ	1000	209.95	0	0	2951.499	209.95	20	215.8	0	209.2	213	0	213.12	1386777	11/14/2013 15:5			
NseCm	HINDUNIL	EQ	0	0	580.25	6995	4080.172	580.25	10	590.45	0	578.6	586	0	584.66	697871	11/14/2013 15:5			
NseCm	ICICIBANK	EQ	0	0	1052.1	175	94931.96	1052.1	5	1067.85	0	1026.95	1026.95	0	1055.53	3309424	11/14/2013 15:5			
NseCm	IDFC	EQ	33282	104.3	0	0	13726.71	104.3	800	104.95	0	102.65	102.65	0	103.99	13200030	11/14/2013 15:5			
NseCm	INDUSIND	EQ	1491	411.4	0	0	6535.083	411.4	100	421.75	0	409.05	412	0	414.71	1575820	11/14/2013 15:5			
NseCm	INFY	EQ	42	3354.25	0	0	18251.56	3354.25	1	3375	0	3350.09	3352.3	0	3361.61	542941	11/14/2013 15:5			
NseCm	ITC	EQ	68	314.45	0	0	13559.73	314.45	87	318	0	312	312	0	315.71	4288662	11/14/2013 15:5			
NseCm	JINDALSTE	EQ	0	0	238.65	565	4957.094	238.65	25	241.8	0	237	238.6	0	239.08	2073404	11/14/2013 15:4			

Chat Messaging for Internal Users:

If you are having multiple terminals in your office of the money maker you can chat with your co terminal. For chatting, go to view- Chat window. User need to set opposite user's id in TO and in below box type your message and press send.



Previous Trades:

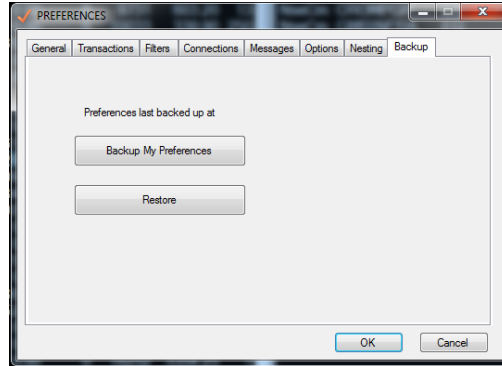
From the menu Trades – Historical Trades user can see his trades of the previous days. When you select the menu a blank screen will appear. Right click on the screen and select “Get Historical Trades”. A screen for filtering will appear. Select the desired filters and click on Fetch. This process is time consuming and is advisable not to use this function during the live market.



Money Maker

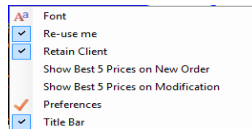
Backup of Settings:

In Tools- Preferences new option is introduced as backup. This will take backup of all the settings you have done in the program like Orders, trades, net position window etc.(this does not includes Price views or settings of price views) which can also be restored in future in case of loss of data or reinstallation.

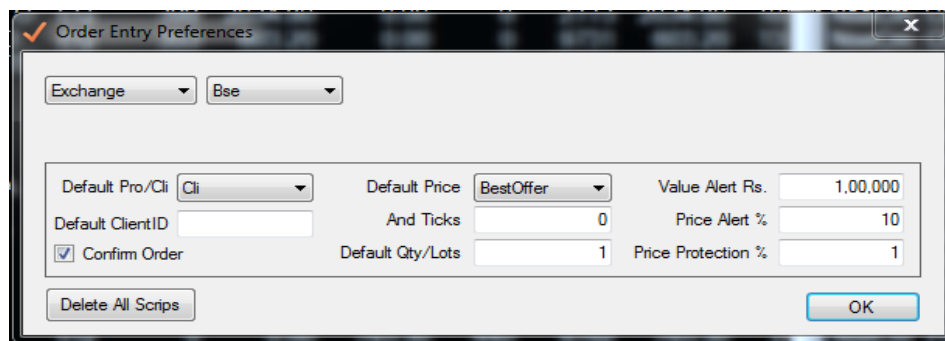


New Additional Order Entry Defaults –QTY, Price, Alert and order Confirmation.(Also set Scrip wise):

For setting this option right click on the order entry for (F1 or F2)



From the given menu selects Preferences option. Below screen will be displayed.



From this menu you can set your desired default for order entry. When this options are set and when you press F1 or F2 the qty and price will be prefilled as per the selection. If you want to set this defaults for specific scrip in the above screen in the place of Exchange select scrip and you will be able to select defaults scrip wise.



Money Maker

Symbol Name Changes for NSE:

To see the Nse cm name changes go To – Informations – Reports- NseCm Name Changes.

Broadcast of Cash Market to FO users:

Now onwards if the user is having the permission for NseFo he will also be able to see the prices of NseCm.

COC in Best 5 window:

COC means Cost of Carry. In the Fo scrip if you press F5 (Best Five) screen a new option COC will appear. This shows the Cost of Carry for the selected expiry. The value will only come if the scrip of the cash market is listed in the view.